

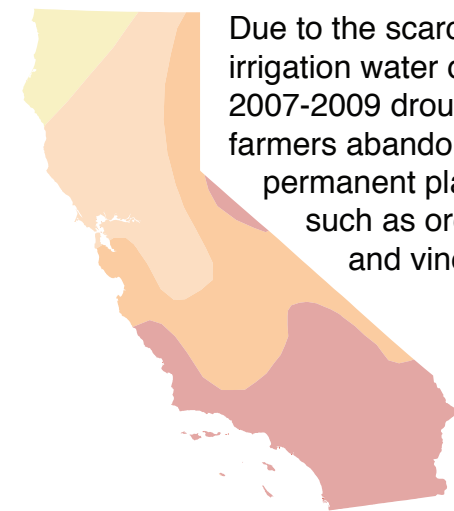
Recent Droughts in California

- DROUGHT INTENSITY
- Exceptional
 - Extreme
 - Severe
 - Moderate
 - Abnormally dry
 - None



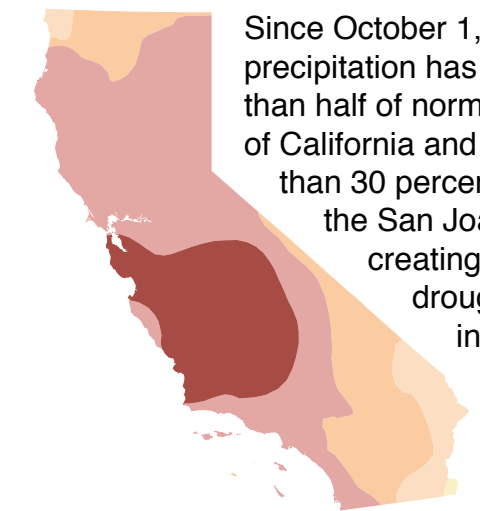
August 13, 2002

Much of the Western United States experienced severe drought conditions in 2002. Rainfall in Southern California was historically low. However, only five years later records were broken again during an even worse drought.



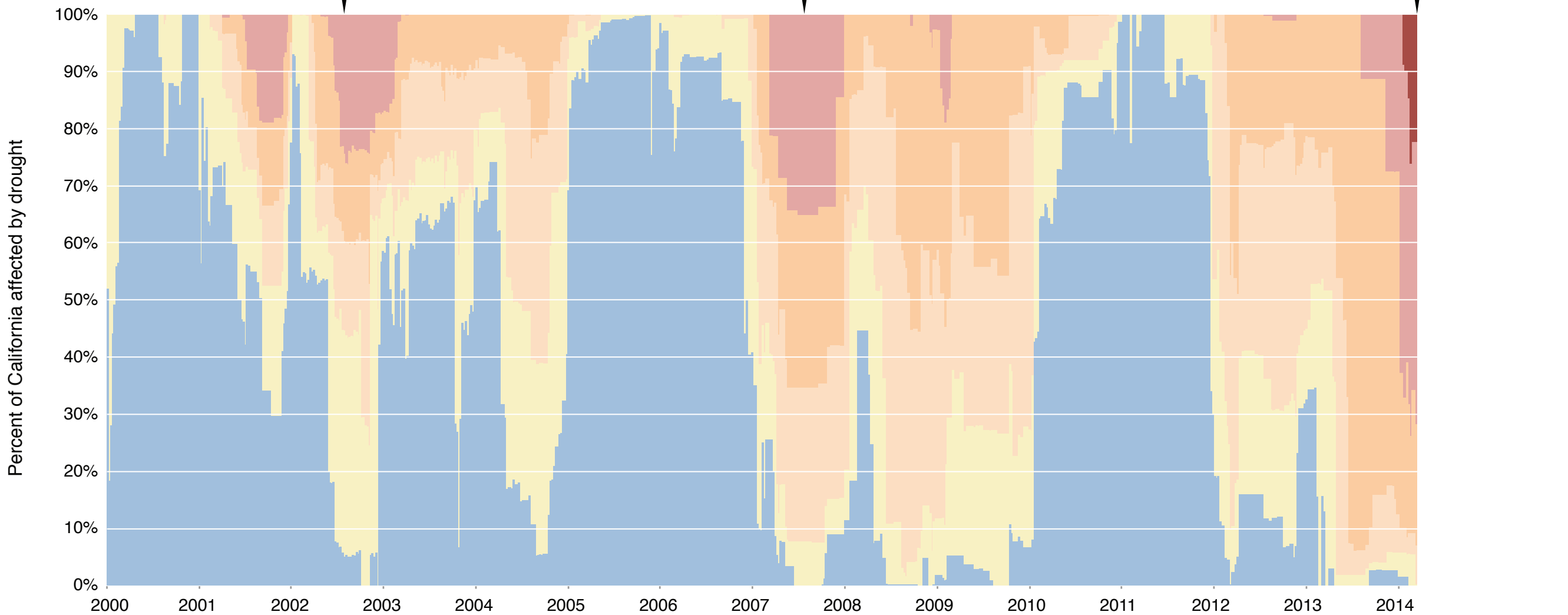
August 14, 2007

Due to the scarcity of irrigation water during the 2007-2009 drought, some farmers abandoned permanent plantings such as orchards and vineyards.



March 18, 2014

Since October 1, 2013, precipitation has averaged less than half of normal over most of California and has been less than 30 percent of normal in the San Joaquin Valley, creating the worst drought conditions in decades.



SOURCE: U.S. Drought Monitor, jointly produced by the National Drought Mitigation Center at the University of Nebraska-Lincoln, the United States Department of Agriculture, and the National Oceanic and Atmospheric Administration.

