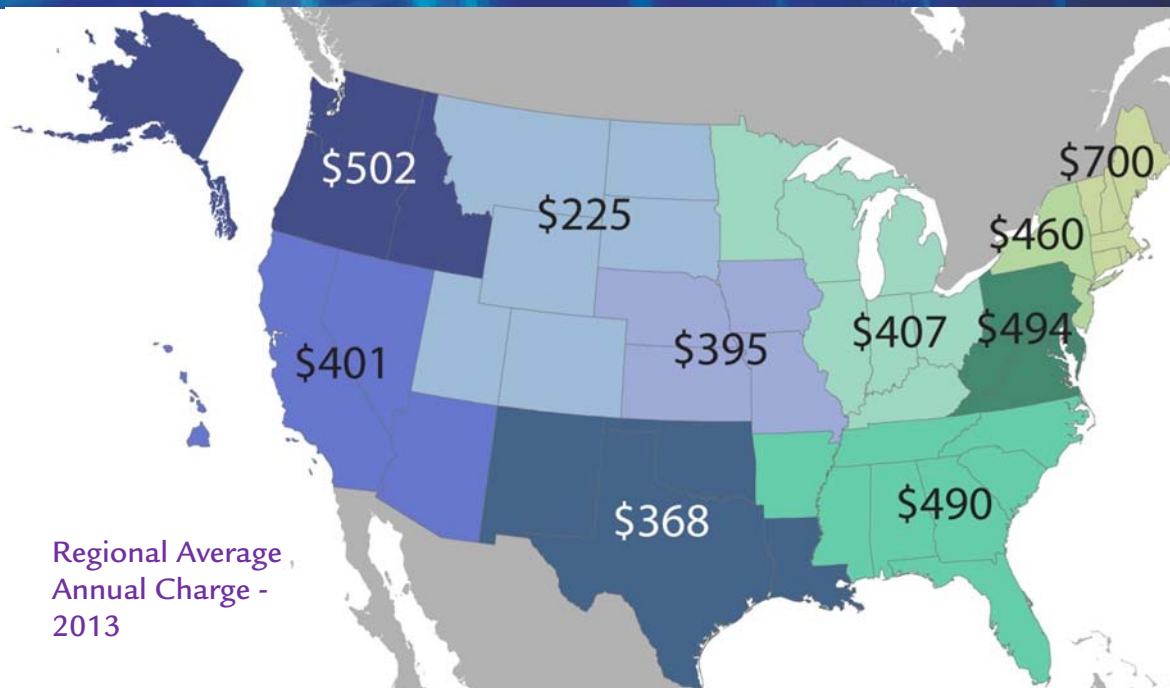


NACWA 2013 COST OF CLEAN WATER INDEX



Regional Average Annual Charge - 2013

Average Charge for Wastewater Services Increases 5.5% in 2013

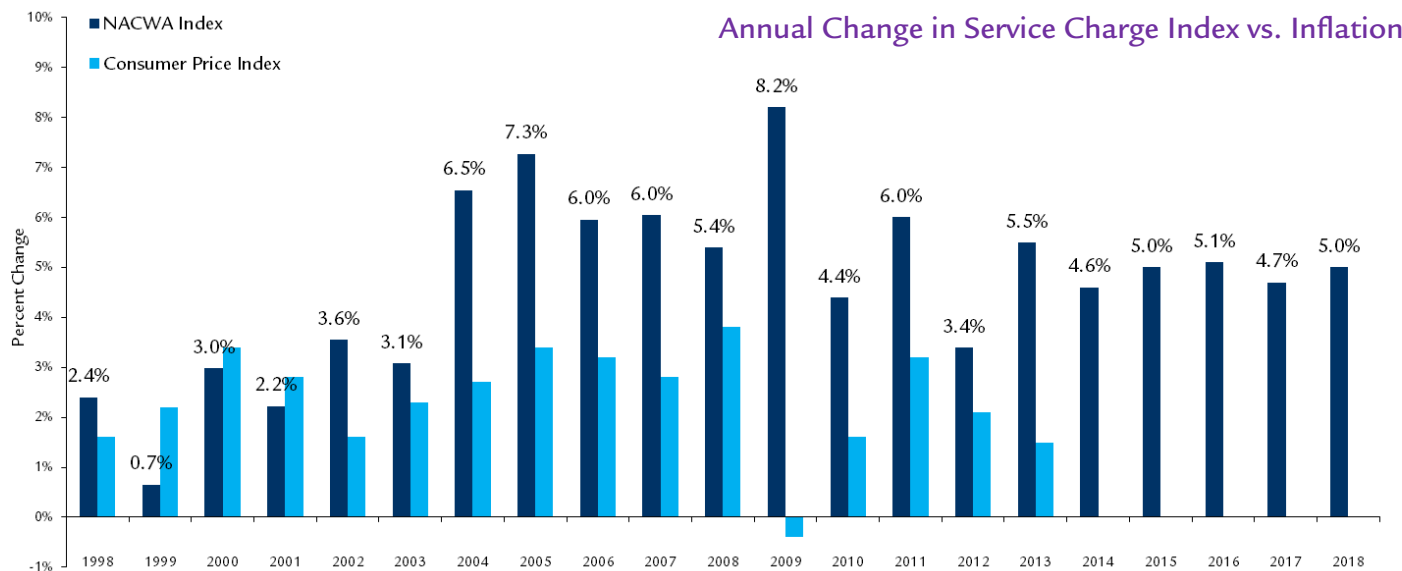
NACWA's 2013 *Cost of Clean Water Index* indicates that the average cost of wastewater services rose 5.5 percent in 2013, more than triple the rate of inflation as measured by the Consumer Price Index (CPI) (see *Service Charge Index vs. Inflation* chart below). The national average amount a single family residence pays for wastewater treatment, also known as the sewer service charge, is now \$435 per year. This is the 12th consecutive year that sewer service charges have increased faster than inflation, nearly doubling the average wastewater service charge since 2002.

The national average of \$435 only tells part of the story. The *Regional Average Annual Charge* map (left) shows a breakdown of charges by EPA Region. The average service charge by Region varies from a low of \$225 in EPA Region 8 to a high of \$700 in EPA Region 1.

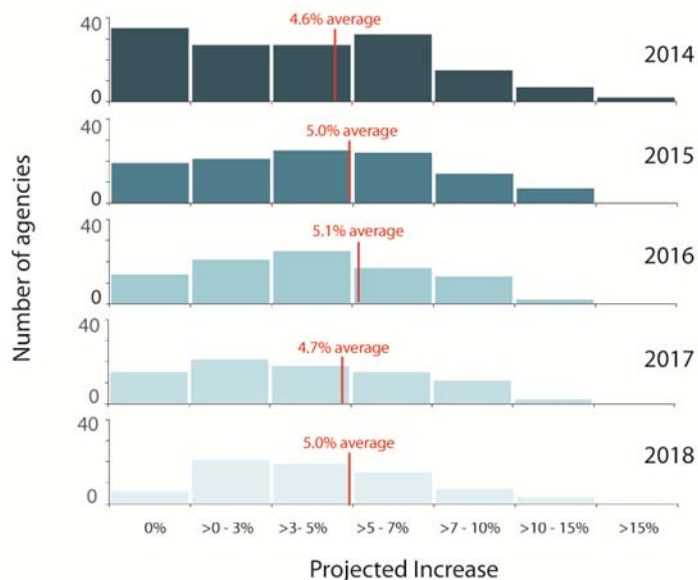
2013 NACWA CLEAN WATER COST INDEX SUMMARY

| | | | | |
|---|-----------------------------------|--|--|--|
| 108 Million POPULATION SERVED | 184 UTILITY RESPONDENTS | \$435 AVERAGE NATIONAL SEWER SERVICE CHARGE | 5.5% INCREASE IN SEWER CHARGES FROM 2012-2013 | 1.5% INCREASE IN CONSUMER PRICE INDEX 2012-2013 |
|---|-----------------------------------|--|--|--|

The *Service Charge Index vs. Inflation* chart (right) presents a national snapshot of the increase in service charges, as compared to inflation, since 1998. Table A-1 (see *Cost of Clean Water Table Data Annex*) provides a breakdown of NACWA *Index* values and service charges back to 1985, the base year for the *Index*. The values for 2013 are based on the responses from 184 NACWA members serving over 108 million people. Additional national and regional data are included in Tables A-1 and A-3 (see *Cost of Clean Water Data Table Annex*).



Projected Increases in Charges, 2014-2018



Projected Charges Expected to Increase 5% per Year Through 2018

Customers pay for sewer services in a variety of ways. Charges may be based on property values, gallons of water used, on a flat rate, or include some combination of these values. Because of this variability, the NACWA Index uses what the average single-family residence pays annually because it is a more consistent measure to track the cost of services over the years. This year NACWA's Index indicates that clean water utilities are expecting average charges to continue to increase about 5 percent per year for the next five years. The *Projected Increases in Charges, 2014-2018* chart (left) shows the projected percentage increase in charges distributed among agency respondents.

Average Charge to Reach \$500 in 2016

The *Annual Average Service Charge* chart (below) presents a national snapshot of sewer service charges since 1998, and provides a projection of charges through 2018. The national average sewer service charge is expected to top \$500 in 2016.

Annual Average Service Charge, 1998 – 2013 & Projected



Disclaimers: The NACWA Index strives to use the best available data each year when determining current and historical household charges and trends. These data are intended for comparison purposes only, and are subject to change from one year to the next. While this document presents the most up-to-date data available, if better data become available in the future, the data presented here may be modified.

Additional data and information on the NACWA Index, past years' surveys, and regional summaries of the data from the 2013 NACWA Index are available on NACWA's website at www.nacwa.org/utilitymanagement